

This copy is a reprint which includes current pages from Change 1.

*TM 3-4240-241-34P

DEPARTMENT OF THE ARMY TECHNICAL MANUAL

DIRECT SUPPORT AND GENERAL SUPPORT
MAINTENANCE REPAIR PARTS AND SPECIAL TOOLS LIST
(INCLUDING DEPOT MAINTENANCE REPAIR PARTS AND SPECIAL TOOLS)

FILTER UNITS, GAS-PARTICULATE, EMD AND GED, 300 CFM, ABC-M6
FSN 4240-368-6127
FSN 4240-368-6126
AND
FILTER UNITS, GAS-PARTICULATE, EMD AND GED, 300 CFM, ABC-M6A1
FSN 4240-889-2317
FSN 4240-889-2316

Headquarters, Department of the Army, Washington, D.C.
26 October 1972

	Page	Illus figure
SECTION I. INTRODUCTION	1	..
II. REPAIR PARTS LIST	6	..
Group 100. Blower assembly	6	1
Electric motor installation	7	2
300. Gasoline engine installation	8	3
400. Top manifold	9	4
500. Canister assembly	11	5
600. Air inlet assembly	12	6
700. Air outlet assembly	13	7
SECTION III. SPECIAL TOOLS LIST. Not applicable	21	..
IV. FEDERAL STOCK NUMBER AND REFERENCE NUMBER INDEX	22	..

SECTION I INTRODUCTION

1. Scope

This manual lists repair parts required for the performance of direct support, general support, and depot maintenance of the ABC-M6 and ABC-M6A1 Alter units.

2. General

This Repair Parts and Special Tools List is divided into the following sections:

a. Repair Parts List-Section II. A list of repair parts authorized at the direct support,

general support, and depot levels for the performance of maintenance. The list also includes parts which must be removed for the replacement of the authorized parts. Parts list is composed of functional groups in ascending numerical sequence, with parts in each group listed in figure and item number sequence.

b. Special Tools List-Section III. Not applicable.

c. Federal Stock Number and Reference Number Index-Section IV. A list, in ascending nu-

*This manual supersedes TM 3-4240-241-35P, 24 May 1965; and TM 3-4240-207-35P, 3 August 1961, including all changes.

merical sequence, of all Federal stock numbers appearing in the listings, followed by a list, in alphameric sequence, of all reference numbers appearing in the listings. Federal stock numbers and reference numbers are cross-referenced to each illustration figure and item number appearance.

3. Explanation of Columns

The following provides an explanation of columns found in the tabular listings.

a. Source, Maintenance, and Recoverability Codes (SMR), (5 Positions).

(1) Source codes (positions 1 and 2). Indicates the source for the listed items. Source codes are-

Code	Explanation
PA	Item procured and stocked for anticipated or known usage.
PE	Item procured and stocked for insurance purposes because essentiality dictates that a minimum quantity be available in the supply systems.
PC	Item procured and stocked and which otherwise would be coded PA except that it is deteriorative in nature.
PD	Support item, excluding support equipment, procured for initial issue or outfitting and stocked only for subsequent or additional initial issues or outfittings. Not subject to automatic replenishment.
PE	Support equipment procured and stocked for initial issue or outfitting to specified maintenance repair activities.
PF	Support equipment which will not be stocked but which will be centrally procured on demand.
PG	Item procured and stocked to provide for sustained support for the life of the equipment. It is applied to an item peculiar to the equipment which because of probable discontinuance or shutdown of production facilities would prove uneconomical to reproduce at a later time.
KD	An item of depot overhaul/repair kit and not purchased separately, Depot kit defined as a kit that provides items required at the time of overhaul or repair.
KF	An item of a maintenance kit and not purchased separately. Maintenance kit defined as a kit that provides an item that can be replaced at organizational or intermediate levels of maintenance.
KB	Item included in both a depot overhaul/repair kit and a maintenance kit.
MO	Item to be manufactured or fabricated at organizational level.
MF	Item to be manufactured or fabricated at the direct support maintenance level.
MH	Item to be manufactured or fabricated at the general support maintenance level.
MD	Item to be manufactured or fabricated at depot maintenance level.
AO	Item to be assembled at organizational level.

Code	Explanation
AF	Item to be assembled at the direct support maintenance level.
AH	Item to be assembled at the general support maintenance level.
AD	Item to be assembled at depot maintenance levels.
XA	Item is not procured or stocked because the requirements for the item will result in the replacement of the next higher assembly.
XB	Item is not procured or stocked. If not available through salvage, requisition.
XC	Installation drawing, diagram, instruction sheet, field service drawing, that is identified by manufacturers' part number.

NOTE

Cannibalization or salvage may be used as a source of supply for any items source coded above except those coded XA and aircraft support items as restricted by AR 700-42.

(2) Maintenance codes (positions 3 and 4).

(a) Position 3. The maintenance code entered in third position indicates the lowest maintenance level authorized to remove, replace, and use the support item. Capabilities of higher maintenance categories are considered equal or better. Maintenance codes are-

Code	Explanation
C	Crew/operator
O	Organizational maintenance
F	Direct support maintenance
H	General support maintenance
D	Depot maintenance

(b) Position 4. The maintenance code entered in the fourth position indicates whether the item is to be repaired and identifies the lowest maintenance level with the capability to perform complete repair (i.e., all authorized maintenance functions). Capabilities of higher maintenance categories are considered equal or better. Maintenance codes are-

Code	Explanation
O	Organizational maintenance
F	Direct support maintenance
H	General support maintenance
D	Depot maintenance
Z	Non-repairable. No repair is authorized.

(3) Recoverability code (position 5). Indicates whether unserviceable items should be returned for recovery or salvage. Recoverability codes are-

Code	Explanation
Z	Non-repairable item. When unserviceable, condemn and dispose at the level indicated in position 3.

Code	Explanation
F	Repairable item. When uneconomically repairable, condemn and dispose at the direct support level.
H	Repairable item. When uneconomically repairable, condemn and dispose at the general support level.
D	Repairable item. When beyond lower level repair capability, return to depot. Condemnation and disposal not authorized below depot level.
L	Repairable item. Repair, condemnation and disposal not authorized below depot/Specialized Repair Activity level.
A	Item requires special handling or condemnation procedures because of specific reasons (i.e., precious metal content, high dollar value, critical material or hazardous material),. Refer to appropriate manuals/directives for specific instructions.

b. Federal Stock Number. Indicates the Federal stock number assigned to the item and will be used for requisitioning purposes.

c. Description. Indicates the Federal item name and a minimum description required to identify the item. The last line indicates the reference number followed by the applicable Federal Supply Code for Manufacturer (FSCM) in parentheses. The FSCM is used as an element in item identification to designate manufacturer or distributor or Government agency, etc., and is identified in SB 708-42.

d. Unit of Measure (U/M). Indicates the standard or basic quantity by which the listed item is used in performing the actual maintenance function. This measure is expressed by a two-character alphabetical abbreviation, e.g., ea, in., pr, etc., and is the basis used to indicate quantities and allowances in subsequent columns. When the unit of measure differs from the unit of issue, the lowest unit of issue that will satisfy the required units of measure will be requisitioned.

e. Quantity Incorporated in Unit. Indicates the quantity of the item used in the breakout shown on the illustration figure, which is prepared for a functional group, subfunctional group, or an assembly. A "V" appearing in this column in lieu of a quantity indicates that no specific quantity is applicable, e.g., shims, spacers, etc.

f. 30-Day DS/GS Maintenance Allowances.

(1) An asterisk (*) entered in the direct support (DS) and/or general support (GS) sub-columns indicates that the repair part is authorized for use at that level and will be requisitioned on an "as required" basis.

(2) The repair parts authorized at the DS/GS levels are for the maintenance mission at these levels.

(3) Requirements for repair parts stockage and for distribution to supported units will be based on demand and determined in accordance with AR 710-2.

g. 1-Year Allowances Per 100 Equipments/Contingency Planning Purposes. An asterisk (*) entered in this column indicates that the total quantity of the repair part required for distribution and contingency planning purposes will be based on demand data.

h. Depot Maintenance Allowance Per 100 Equipments. An asterisk (*) entered in this column indicates that the repair part is authorized for use at the depot level, and will be requisitioned on an "as required" basis.

i. Illustration. This column is divided as follows :

(1) Figure number. Indicates the figure number of the illustration on which the item is shown.

(2) Item number. Indicates the callout number used to reference the item on the illustration.

4. Special Information

a. Action change codes indicated in the left-hand margin of the listing page denote the following :

N-Indicates an added item.

C-Indicates a change in data.

R-Indicates a change in FSN only.

b. The following publications pertain to the ABC-M6 and ABC-M6A1 filter units and their components :

TM 3-4240-207-12 Operator's and Organizational Maintenance Manuals

TM 3-4240-241-12 Operator's and Organizational Maintenance Manuals

TM 3-4240-241-20P Organizational Maintenance Repair Parts and Special Tools List

TM 3-4240-207-35 Direct Support, General Support and Depot Maintenance Manuals

TM 3-4240-241-35 Direct Support, General Support and Depot Maintenance Manuals

c. When either the gasoline power unit or the electric motor installed on the M6 filter unit be-

comes uneconomically repairable, replacement, as appropriate, may be effected by installing the gasoline engine or the electric motor authorized the

M6A1 filter unit. Requisitions should include associated parts and assemblies peculiar to the M6A1 model as indicated below:

FSN	Description	Quantity	Applicable drive	
			GED	EMD
2805-714-8552	Engine, gasoline	1	X	
6105-066-4478	Motor, alternating current	1		X
4240-066-4484	Stand, engine	1	X	X
4240-066-4477	Spacer block, gasoline engine	2	X	
4240-066-4482	Spacer block, electric motor	2		X
5305-269-3218	Screw, cap, hex hd, stl, 3/8-16 UNC-2A x 2½ lg	4	X	X
4240-076-3473	Adapter, gasoline can	1	X	
4720-889-2368	Hose assembly, gasoline	1	X	
4730-187-0842	Adapter, straight, pipe to tube	1	X	
4730-186-7797	Nipple, pipe, brass, cad pltd, 1/8-27 NPT x 1 in. lg	1	X	
5305-071-2236	Screw, cap, hex hd, stl, cad or zinc pltd, ¼-20 UNC-2A x 2¼ lg	6	X	
5310-582-5965	Washer, lock, stl, pltd, ¼ in. nom bolt size	12	X	
5305-068-0502	Screw, cap, hex hd, stl, cad or zinc pltd, ¼-20 UNC-2A x ¾ lg	6	X	
5305-984-6210	Screw, machine, stl, pan hd, slotted, cad or zinc pltd, #10-24 NC-2A x ½ lg	2	X	
5310-934-9758	Nut, plain, hexagon, cad or zinc pltd, #10-24 NC-2B	2	X	
5310-186-7499	Washer, lock, stl, cad or zinc pltd, #10 nom size	2	X	
5330-066-4475	Gasket, exhaust tube	1	X	
4240-066-4476	Connection, exhaust tube	1	X	
4720-387-9800	Hose assembly, metal	1	X	
5306-050-1237	Bolt, machine, stl, 5/16-24 UNF-2A x 3/8 lg	1	X	X
5310-407-9566	Washer, lock, 5/16 nom size	1	X	X
5310-087-7493	Washer, flat, 5/16 nom size	1	X	X
4240-075-2343	Rushing, drive	1	X	X
4240-066-4485	Impeller, fan	1	X	X
5305-269-3208	Screw, cap, hex hd, stl, 3/8-16 UNC-2A x 5/8 lg	4	X	X
5310-627-6128	Washer, lock, ext teeth, 3/8 nom size	4	X	X
5330-066-4474	Gasket, blower	1	X	X

Excess parts and assemblies peculiar to the M6 model may be disposed of through normal procedures.

5. How to Locate Repair Parts

a. When Federal stock number or reference number is unknown:

(1) First. Using the Table of Contents, determine the functional group within which the repair part belongs, i.e., blower assembly, electric motor installation, etc. This is necessary since illustrations are prepared for functional groups and listings are divided into the same groups.

(2) Second. Find the illustration covering the group to which the repair part belongs.

(3) Third. Identify the repair part on the illustration and note the illustration figure and item number on the repair part.

(4) Fourth. Using the Repair Parts Listing, find the functional group to which the repair part belongs and locate the illustration figure and item number noted on the illustration.

b. When Federal stock number or reference number is known:

(1) First. Using the Index of Federal Stock Numbers and Reference Numbers, find the pertinent Federal stock number or reference number. This index is in ascending FSN sequence followed by a list of reference numbers in ascending alphabetic sequence, cross-referenced to the illustration figure number and item number.

(2) Second. Using the Repair Parts Listing, find the functional group of the repair part and

the illustration figure number and item number referenced in the Index of Federal Stock Numbers and Reference Numbers.

6. Abbreviations

Abbreviations	Explanation
C	cycle(s)
cad pltd	cadmium plated
cad or zn pltd	cadmium or zinc plated
HP	horsepower

7. Report of Equipment Publication Improvements

The reporting of errors, omissions, and recommendations for improving this publication by the individual user is encouraged. Reports should be submitted on DA Form 2028 (Recommended Changes to Publications) and forwarded direct to Commander, Edgewood Arsenal, ATTN: SMUEA-DE-ETL, Edgewood Arsenal, MD 21010.

SECTION II

REPAIR PARTS LIST

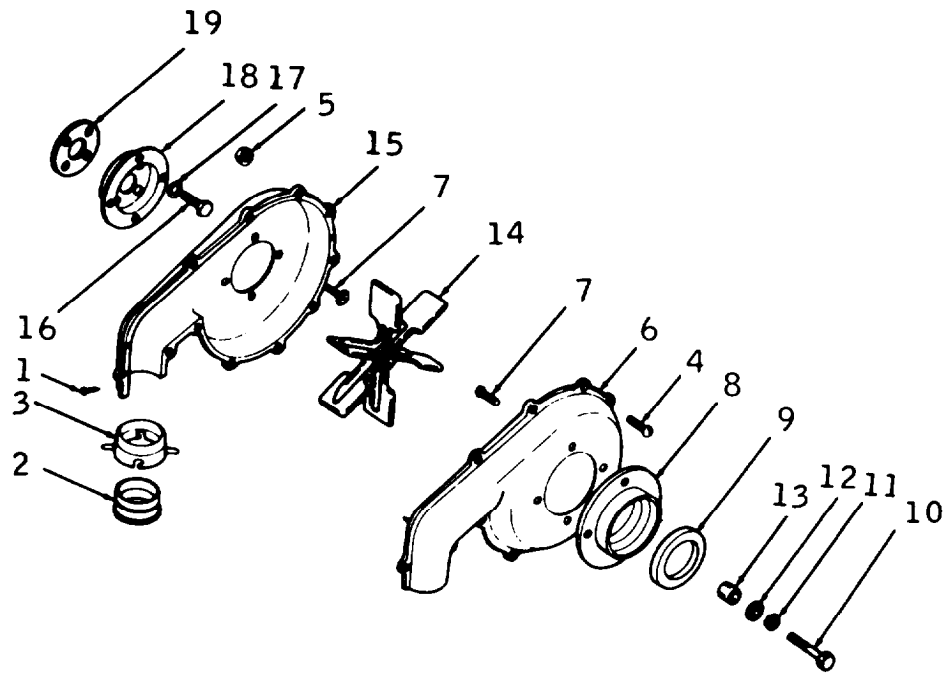
	(1) SMR code	(2) Federal stock number	(3) Description Reference number & mfr. code Usable on code		(4) Unit of meas	(5) Qty inc in unit	(6) 30-day DS maint allowance			(7) 30-day GS maint allowance			(8) 1-yr alw per 100 equip cntgcy	(9) Depot Maint alw per 100 equip	(10) Illustration	
							(a)	(b)	(c)	(a)	(b)	(c)			(a) Figure No.	(b) Item No.
							1-20	21-50	51-100	1-20	21-50	51-100				
			GROUP 100-BLOWER ASSEMBLY													
C	PA FZ Z	5305-959-6263	SCREW, TAPPING, THREAD CUTTING #8 x 3/8 lg MS24625-29 (96906)		ea	4	*	*	*	*	*	*	*	*	1	1
C	PA FZ Z	4240-694-1414	TUBE, LOCKING COUPLING C5-19-680 (81361)		ea	1	*	*	*	*	*	*	*	*	1	2
C	PA FZ Z	4240-193-6159	COUPLING, LOCKING C5-19-681 (81361)		ea	1	*	*	*	*	*	*	*	*	1	3
C	PA FZ Z	5305-993-2461	SCREW, MACHINE stl, 1/4-28 UNF x 3/4 lg MS35207-281 (96906)		ea	11	*	*	*	*	*	*	*	*	1	4
C	PA FZ Z	5310-877-5796	NUT, SELF-LOCKING, HEXAGON 1/4-28 UNF-3B MS21044N4 (96906)		ea	11	*	*	*	*	*	*	*	*	1	5
C	PA FZ Z	4240-343-7912	CASING, BLOWER, LEFT HAND D5-19-711 (81361)		ea	1	*	*	*	*	*	*	*	*	1	6
C	XB FZ Z		SCREW, ASSEMBLED WASHER #12-24 NC-2A x 1/2 lg 445558 (81361)		ea	8									1	7
C	PA FZ Z	4240-508-0319	ADAPTER, LOCKING COUPLING C5-19-675 (81361)		ea	1	*	*	*	*	*	*	*	*	1	8
C	PA OZ Z	5330-515-5687	GASKET, RUBBER 5 per bag B5-19-679 (81361)		bg	1	*	*	*	*	*	*	*	*	1	9
C	PA FZ Z	5306-050-1237	BOLT, MACHINE stl, 5/16-24 UNF-2A x 5/8 lg MS90727-31 (96906)		ea	1	*	*	*	*	*	*	*	*	1	10
C	PA FZ Z	5310-407-9566	WASHER, LOCK 5/16 nom size MS35338-45 (96906)		ea	1	*	*	*	*	*	*	*	*	1	11

	(1) SMR code	(2) Federal stock number	(3) Description Reference number & mfr. code Usable on code	(4) Unit of meas	(5) Qty inc in unit	(6) 30-day DS maint allowance			(7) 30-day GS maint allowance			(8) 1-yr alw per 100 equip cntgcy	(9) Depot Maint alw per 100 equip	(10) Illustration	
						(a)	(b)	(c)	(a)	(b)	(c)			(a)	(b)
						1-20	21-50	51-100	1-20	21-50	51-100			Figure No.	Item No.
C	PA FZ Z	5310-087-7493	WASHER, FLAT 5/16 nom size MS27183-13 (96906)	ea	1	*	*	*	*	*	*	*	*	1	12
C	PA FZ Z	4240-075-2343	BUSHING, DRIVE B5-19-1818 (81361)	ea	1	*	*	*	*	*	*	*	*	1	13
C	PA FZ Z	4240-066-4485	IMPELLER, FAN, CENTRIFUGAL D519-1797 (81361)	ea	1	*	*	*	*	*	*	*	*	1	14
C	PA FZ Z	4240-343-7911	CASING, BLOWER, RIGHT HAND D5-19-712 (81361)	ea	1	*	*	*	*	*	*	*	*	1	15
N	PA FZ Z	5305-269-3208	SCREW, CAP, HEXAGON HEAD 3/8-16 UNC-2A x 5/8 lg MS90725-57 (96906)	ea	4	*	*	*	*	*	*	*	*	1	16
C	PA FZ Z	5310-627-6128	WASHER, LOCK ext teeth, 3/8 nom size MS35335-35 (96906)	ea	4	*	*	*	*	*	*	*	*	1	17
C	PA FZ Z	4240-340-2644	MOUNT, BLOWER C5-19-678 (81361)	ea	1	*	*	*	*	*	*	*	*	1	18
C	PA FZ Z	5330-066-4474	GASKET, BLOWER B5-19-1810 (81361)	ea	1	*	*	*	*	*	*	*	*	1	19
GROUP 200-ELECTRIC MOTOR INSTALLATION															
C	PA FZ Z	5305-269-3218	SCREW, CAP, HEXAGON HEAD stl 3/8-16 UNC-2A x 2 1/2 lg MS90725-68 (96906)	ea	4	*	*	*	*	*	*	*	*	2	1
C	PA FZ Z	5310-732-0558	NUT, PLAIN, HEXAGON 3/8-16 UNC-2B MS51967-8 (96906)	ea	4	*	*	*	*	*	*	*	*	2	2
C	PA FZ Z	5310-637-9541	WASHER, LOCK, SPILT 3/8 nom size MS35338-46 (96906)	ea	4	*	*	*	*	*	*	*	*	2	3
C	PA FD D	6105-066-4478	MOTOR, ALTERNATING CURRENT 115 v or 230 v, 60 c, 1 HP C5-19-1795 (81361)	ea	1	*	*	*	*	*	*	*	*	2	4

	(1) SMR code	(2) Federal stock number	(3) Description Reference number & mfr. code Usable on code	(4) Unit of meas	(5) Qty inc in unit	(6) 30-day DS maint allowance			(7) 30-day GS maint allowance			(8) 1-yr alw per 100 equip cntgcy	(9) Depot Maint alw per 100 equip	(10) Illustration	
						(a)	(b)	(c)	(a)	(b)	(c)			(a)	(b)
						1-20	21-50	51-100	1-20	21-50	51-100			Figure No.	Item No.
C	PA OZ Z	4240-066-4476	CONNECTION, EXHAUST TUBE B5-19-1814 (81361)	ea	1	*	*	*	*	*	*	*	*	3	10
C	PA OZ Z	4720-387-9800	HOSE ASSEMBLY, METAL C5-19-965 (81361)	ea	1	*	*	*	*	*	*	*	*	3	11
C	PA OO Z	4240-076-3473	ADPTER, GASOLIN CAN C5-19-1816 (81361)	ea	1	*	*	*	*	*	*	*	*	3	12
C	PA OZ Z	4730-187-0485	NIPPLE, TUBE std, cad pltd, 1/2-20 UNF-3A AN815-5 (88044)	ea	2	*	*	*	*	*	*	*	*	3	13
N	XA		FILLING PLUG ASSEMBLY MIC-C-1283 (81349)		1									3	14
C	PA OZ Z	4720-889-2368	HOSE ASSEMBLY, RUBBER MS28741-5-1200 (96906)	ea	1	*	*	*	*	*	*	*	*	3	15
C	PA OZ Z	4730-187-0842	ADAPTER, STRAIGHT, PIPE TO TUBE 1/8-NPT x 1/2-20 UNF-3A AN816-5 (88044)	ea	1	*	*	*	*	*	*	*	*	3	16
C	PA OZ Z	4730-186-7797	NIPPLE, PIPE brass, cad pltd, 1/8-27 NPT x 1 n. lg AN911-1 (88044)	ea	1	*	*	*	*	*	*	*	*	3	17
GROUP 400-TOP MANIFOLD															
C	PA OZ Z	5310-877-5795	NUT, SELF-LOCKING, HEXAGON std, cad pltd, 1/2-20 UNF-3B MS21044N8 (96906)	ea	2	*	*	*	*	*	*	*	*	4	1
C	PA OZ Z	5310-809-3079	WASHER, FLAT std, cad pltd, 1/2-20 UNF-3B MS27183-19 (96906)	ea	2	*	*	*	*	*	*	*	*	4	2
C	PA FZ Z	4240-066-4484	STAND, ENGINE ER-19-1806 (81361)	ea	1	*	*	*	*	*	*	*	*	4	3
C	PA OZ Z	5306-639-0461	BOLT, SLIDE 1/2-20 UNF-3A x 1 3/4 lg, 2 per can B5-19-682 981361)	cn	2	*	*	*	*	*	*	*	*	4	4
N	PA FZ Z	5305-253-5606	SCREW, DRIVE #0 x 1/8 lg MS21318-7 (96906)	ea	4	*	*	*	*	*	*	*	*	4	5

	(1) SMR code	(2) Federal stock number	(3) Description Reference number & mfr. code Usable on code	(4) Unit of meas	(5) Qty inc in unit	(6) 30-day DS maint allowance			(7) 30-day GS maint allowance			(8) 1-yr alw per 100 equip cntgcy	(9) Depot Maint alw per 100 equip	(10) Illustration	
						(a)	(b)	(c)	(a)	(b)	(c)			(a)	(b)
						1-20	21-50	51-100	1-20	21-50	51-100			Figure No.	Item No.
N	PA OZ Z	5305-984-6211	SCREW, MACHINE cross recess, #10-4 UNC-2A x 5/8 lg MS35206-264 (96906)	ea	2	*	*	*	*	*	*	*	*	4	18
C	PA OZ Z	4240-340-2669	DAMPER, FLUE B5-19-926 (81361)	ea	1	*	*	*	*	*	*	*	*	4	
C	PA OZ Z	4240-343-7931	SHAFT B5-19-925 (81361)	ea	1	*	*	*	*	*	*	*	*	4	20
GROUP 500-CANISTER ASSEMBLY															
C	PA FZ Z	5305-253-5620	SCREW, DRIVE stl, #6 x 3/8 lg MS21318-29 (96906)	ea	4	*	*	*	*	*	*	*	*	5	1
C	PA FZ Z	4240-694-1413	CONNECTOR, INTAKE MANIFOLD C5-19-674 (81361)	ea	1	*	*	*	*	*	*	*	*	5	2
C	PA OZ Z	4720-066-4519	HOSE, AIR DUCT 5 1/2 in. od C5-19-1800-2 (81361)	ea	1	*	*	*	*	*	*	*	*	5	3
C	PA OZ Z	4720-066-4479	HOSE, AIR DUCT 4 3/8 in. od C5-19-1800-1 (81361)	ea	1	*	*	*	*	*	*	*	*	5	4
C	XA		CLAMP HOSE MS35842-16 (96906)		4									5	5
C	XB OZ Z		BOLT, UPPER B5-19-719 (81361)	ea	8									5	6
C	XB OZ Z		TURNBUCKLE B5-19-793 (81361)	ea	8									5	7
C	XB OZ Z		BOLT, LOWER B5-19-792 (81361)	ea	8									5	8
C	XB FZ Z		MANIFOLD, TOP E5-19-700 (81361)	ea	1									5	9
C	PA OZ Z	4240-256-9094	FILTER, GAS, M10 D5-19-673 (81361)	ea	2	*	*	*	*	*	*	*	*	5	10
C	PA OZ Z	4240-050-8781	FILTER, PARTICULATE, M9A1 D5-19-1821 (81361)	ea	2	*	*	*	*	*	*	*	*	5	11

	(1) SMR code	(2) Federal stock number	(3) Description Reference number & mfr. code Usable on code	(4) Unit of meas	(5) Qty inc in unit	(6) 30-day DS maint allowance			(7) 30-day GS maint allowance			(8) 1-yr alw per 100 equip cntgcy	(9) Depot Maint alw per 100 equip	(10) Illustration	
						(a)	(b)	(c)	(a)	(b)	(c)			(a)	(b)
						1-20	21-50	51-100	1-20	21-50	51-100			Figure No.	Item No.
C	PA FZ Z	4240-066-4481	ADAPTER, HOSE C5-19-734 (81361)	ea	1	*	*	*	*	*	*	*	*	6	6
C	PA FZ Z	4240-193-6159	COUPLING, LOCKING C5-19-681 (81361)	ea	1	*	*	*	*	*	*	*	*	6	7
GROUP 700-AIR OUTLET ASSEMBLY															
C	AF OF F		HOSE ASSEMBLY, AIR OUTLET C5-19-73 (81361)	ea	1									7	-
C	PA OZ Z	4730-278-2505	CLAMP, HOSE 421-75-500W (98625)	ea	2	*	*	*	*	*	*	*	*	7	1
C	PA OZ Z	4720-542-3460	HOSE, AIR DUCT 5 in.dia x 10 ft lg C5-19-1796 (81361)	ea	1	*	*	*	*	*	*	*	*	7	2
C	PA FZ Z	5320-721-5211	RIVET, SOLID, UNIVERSAL HEAD al aly, 1/8 dia x 3/8 lg MS20470A4-6 (96906)	ea	4	*	*	*	*	*	*	*	*	7	3
C	PA FZ Z	5310-550-5009	WASHER, FLAT al aly,#4 nom size MS15795-704 (96906)	ea	4	*	*	*	*	*	*	*	*	7	4
C	PA FZ Z	4240-343-7920	SCREEN ASSEMBLY E5-19-715 (81361)	ea	1	*	*	*	*	*	*	*	*	7	5
C	PA FZ Z	4240-066-4481	ADAPTER, HOSE C5-19-734 (81361)	ea	2	*	*	*	*	*	*	*	*	7	6
C	PA OZ Z	5330-515-5687	GASKEET, RUBBER 5 per bag B5-19-679 (81361)	ea	1	*	*	*	*	*	*	*	*	7	7
C	PA FZ Z	5305-253-5619	SCREW, DRIVE stl, cad or zinc pltd, #6 x 5/16 lg MS21318-28 (96906)	ea	4	*	*	*	*	*	*	*	*	7	8
C	XB FZ Z		CONNECTOR, INLET MANIFOLD B5-19-674 (81361)	ea	1									7	9



MU567961

Figure 1. Blower assembly group.

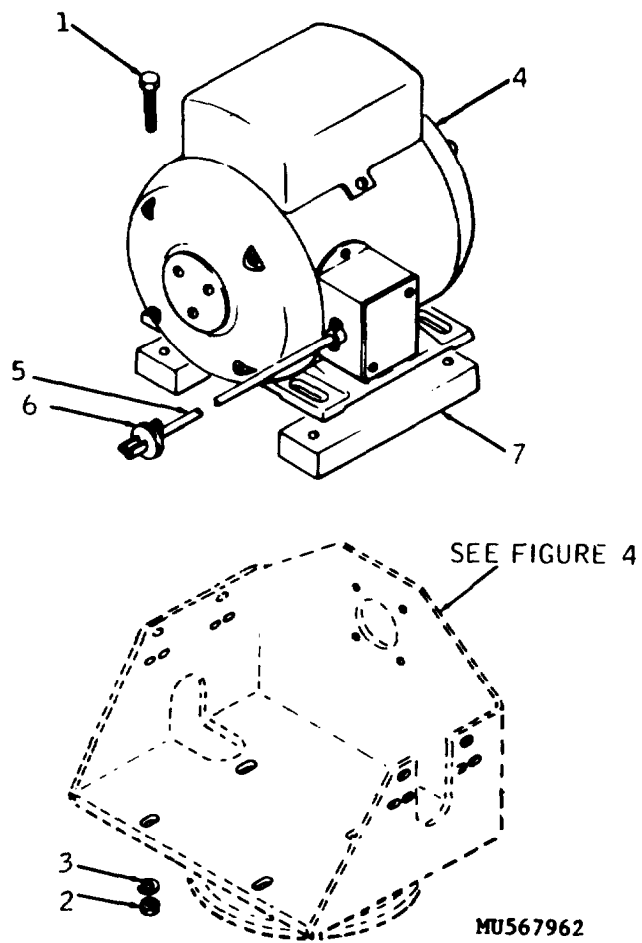


Figure 2. Electric motor installation group.

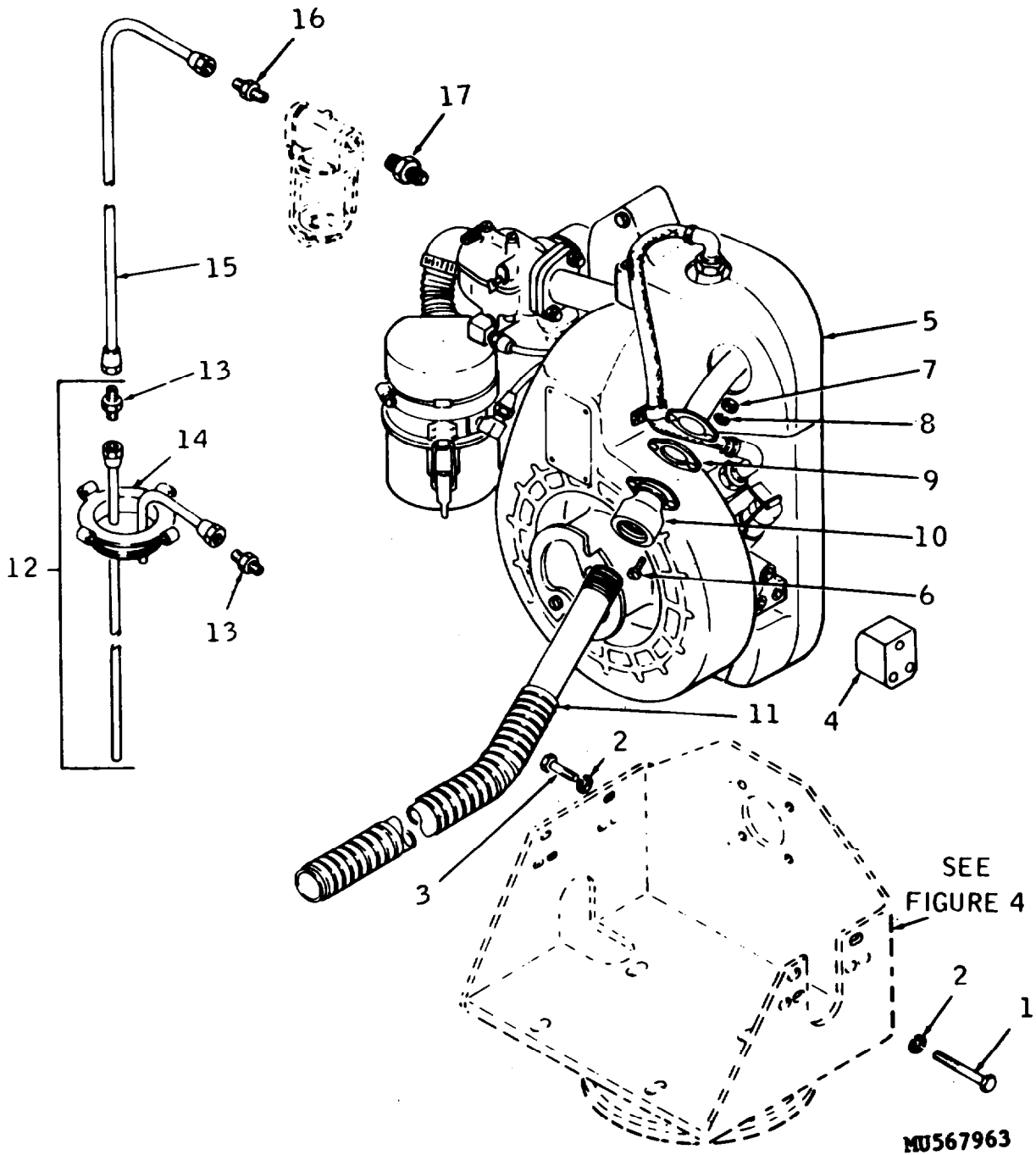
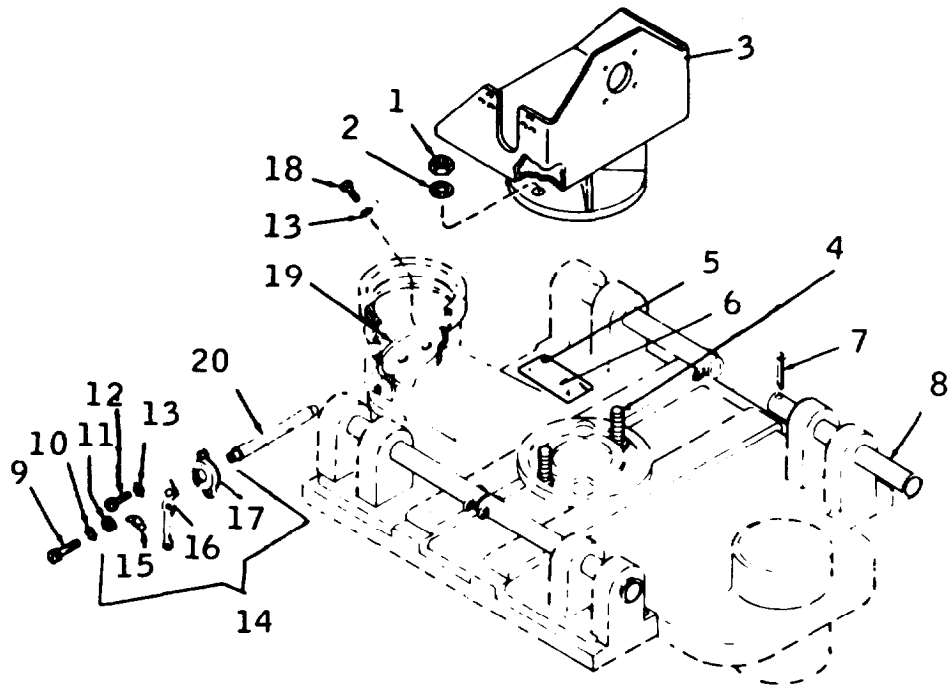


Figure 3. Gasoline engine installation group.



MU567964

Figure 4. Top manifold group.

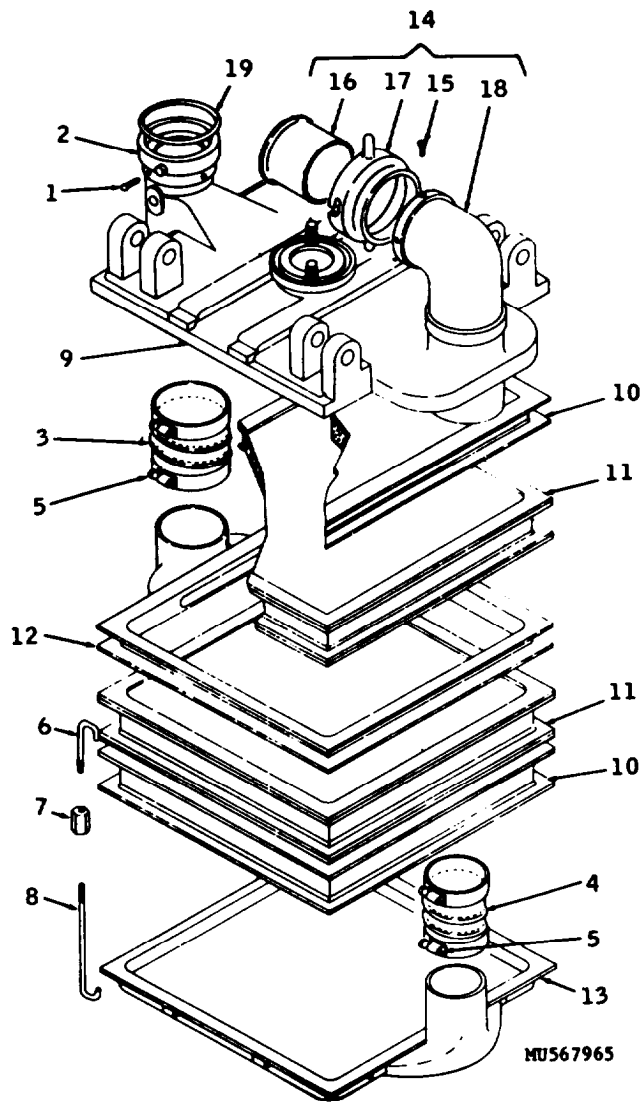


Figure 5. Canister assembly group.

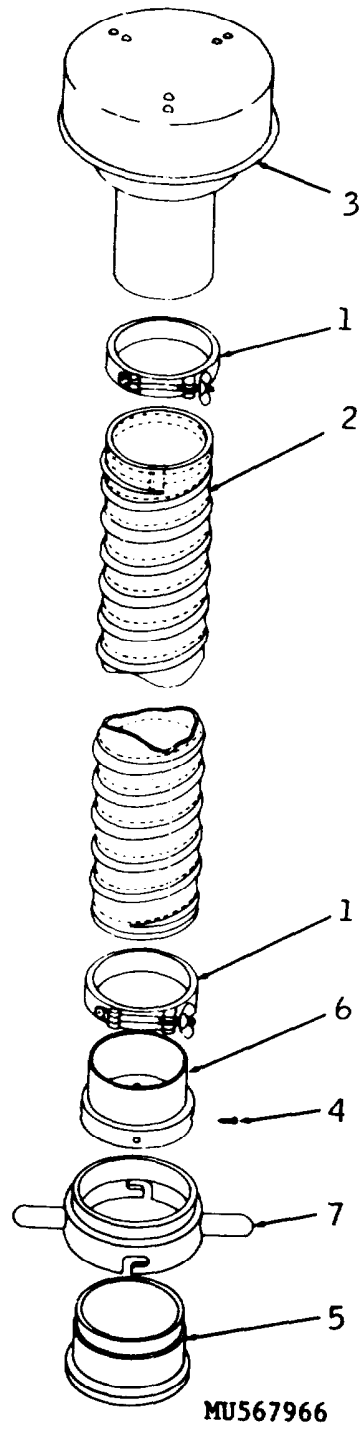


Figure 6. Air inlet assembly group.

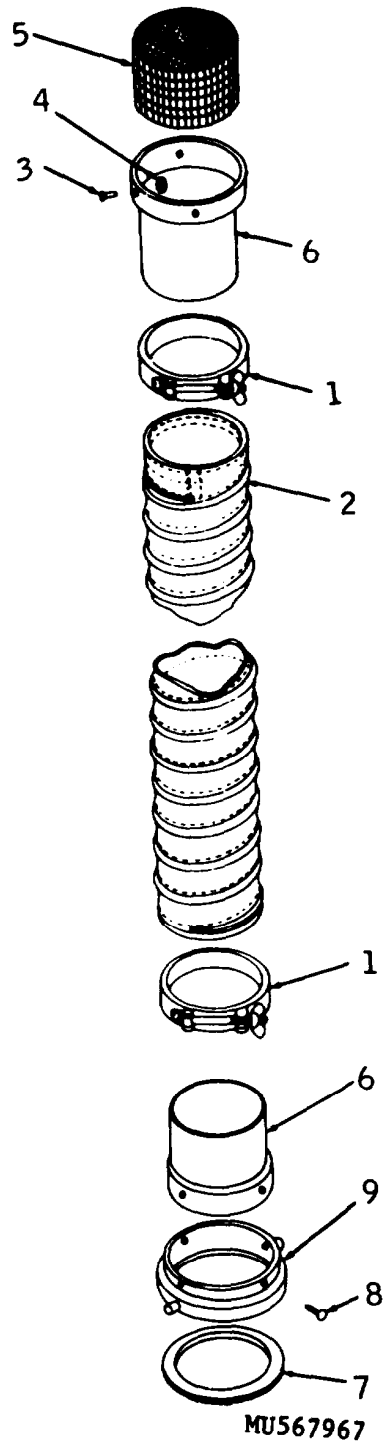


Figure 7. Air outlet assembly group.

SECTION III
SPECIAL TOOLS LIST
(Not applicable)

SECTION IV

FEDERAL STOCK NUMBER AND REFERENCE NUMBER INDEX

Federal Stock Number Cross-Reference to Figure and Item Number

Stock number	Figure No.	Item No.	Stock number	Figure No.	Item No.
2805-714-8552	3	5	4730-187-0842	3	16
4240-050-8781	5	11	4730-278-2505	6	1
4240-066-4476	3	10		7	1
4240-066-4477	3	4	5305-068-0502	3	3
4240-066-4479	5	4	5305-071-2236	3	1
4240-066-4480	4	14	5305-253-5606	4	5
4240-066-4481	6	6	5305-253-5619	7	8
	7	6	5305-253-5620	5	1
4240-066-4482	2	7	5305-269-3208	1	16
4240-066-4484	4	3	5305-269-3218	2	1
4240-066-4485	1	14	5305-787-7107	5	15
4240-066-4519	5	3		6	4
4240-075-2343	1	13	5305-959-6263	1	1
4240-076-3473	3	12	5305-984-4984	4	9
4240-193-6169	1	3	5305-984-6208	4	12
	5	17	5305-984-6210	3	6
	6	7	5305-984-6211	4	18
4240-256-9094	5	10	5305-993-2461	1	4
4240-340-2644	1	18	5306-050-1237	1	10
4240-340-2669	4	19	5306-639-0461	4	4
4240-343-7911	1	16	5310-045-3296	1	12
4240-343-7912	1	6	5310-082-1404	4	11
4240-343-7920	7	5	5310-186-7499	3	8
4240-343-7931	4	20	5310-209-0788	4	10
4240-368-6288	6	3	5310-407-9566	1	11
4240-508-0319	1	8	5310-457-8237	4	15
4240-542-3460	6	2	5310-550-5009	7	4
	7	2	5310-582-5965	3	2
4240-694-1413	5	2	5310-596-7691	4	13
4240-694-1414	1	2	5310-627-6128	1	17
	5	16	5310-637-9541	2	3
	6	5	5310-732-0558	2	2
4720-387-9800	3	11	5310-809-3079	4	2
4720-889-2368	3	15	5310-877-5795	4	1
4730-186-7797	3	17	5310-877-5796	1	5
4730-187-0485	3	13	5310-934-9758	3	7

Stock number	Figure No.	Item No.	Stock number	Figure No.	Item No.
5315-013-7214	4	7		5	19
5320-721-5211	7	3		7	7
5330-066-4474	1	19	5935-681-4819	2	6
5330-066-4475	3	9	6105-066-4478	2	4
5330-515-5687	1	9	6145-112-8671	2	5

Reference Number Crow-Reference to Figure and Item Number

Reference No.	Mfg Code	Fig No.	Item No.	Reference No.	Mfg Code	Fig No.	Item No.
AN815-5	88044	3	13	C5-19-734	81361	6	6
AN816-5	88044	3	16			7	6
AN911-1	88044	3	17	C5-19-735	81361	6	—
AN935-416	88044	3	2	C5-19-736	81361	7	—
B5-19-1803	81361	4	14	C5-19-737	81361	6	3
B5-19-1808	81361	2	7	C5-19-965	81361	3	11
B5-19-1809	81361	3	4	D5-19-1797	81361	1	14
B5-19-1810	81361	1	19	D5-19-1821	81361	5	11
B5-19-1812	81361	3	9	D5-19-665	81361	5	12
B5-19-1813	81361	3	10	D5-19-673	81361	5	10
B5-19-1818	81361	1	13	D5-19-701	81361	5	13
B5-19-1897	81361	4	6	D5-19-711	81361	1	6
B5-19-674	81361	7	9	D5-19-712	81861	1	15
B5-19-679	81361	1	9	E5-19-1806	81361	4	3
		5	19	E5-19-700	81361	5	9
		7	7	E5-19-715	81361	7	5
B5-19-682	81361	4	4	FFN845	81348	4	15
B5-19-716	81361	5	14	JC580	81348	2	5
B5-19-719	81361	5	6	K2-1	02126	4	16
B5-19-792	81361	5	8	K2-2	02126	4	17
B5-19-793	81361	5	7	ML-C-1283	81349	3	14
B5-19-925	81361	4	20	MS15795-704	96906	7	4
B5-19-926	81361	4	19	MS20470A4-6	96906	7	3
B5-19-960	81361	4	8	MS21644N4	96906	1	5
C5-19-1795	81361	2	4	MS21044N8	96906	4	1
C5-19-1796	81361	6	2	MS21318-28	96906	7	8
		7	2	MS21318-29	96906	5	1
C5-19-1800-1	81361	6	4	MS21318-7	96906	4	5
C5-19-1800-2	81361	5	3	MS24625-29	96906	1	1
C5-19-1816	81361	3	12	MS24625-30	96906	6	15
C5-19-674	81361	5	2			6	4
C5-19-675	81361	1	8	MS24665-359	96906	4	7
C5-19-676	81361	5	18	MS27183-13	96906	1	12
C5-19-678	81361	1	18	MS27183-19	96906	4	1
C5-19-680	81361	1	2	MS27183-6	96906	4	11
		5	16	MS28741-5-1200	96906	3	15
		6	5	MS35206-227	96906	4	9
C5-19-681	81361	1	3	MS35206-261	96906	4	12
		5	17	MS35206-263	96906	3	6
		6	7				

Reference No.	Mfg Code	Fig No.	Item No.	Reference No.	Mfg Code	Fig No.	Item No.
MS35206-264	96906	4	18	MS51967-8	96906	2	2
MS35207-281	96906	1	4	MS90725-15	96906	3	1
MS35335-30	96906	4	10	MS90725-6	98906	3	3
MS35335-32	96906	4	13	MS90727-31	96906	1	10
MS35335-35	96906	1	17	MS90725-57	96906	1	16
MS35338-43	96906	3	8	MS90725-68	96906	2	1
MS35338-45	96906	1	11	1A08-2	97403	3	5
MS35338-46	96906	2	3	421-75-500W	98625	6	1
MS35649-202	96906	3	7			7	1
MS35842-16	96906	5	5	445558	24617	1	7
				7056	74545	2	6

By Order of the Secretary of the Army:

Official:

VERNE L. BOWERS,
Major General, United States Army,
The Adjutant General.

CREIGHTON W. ABRAMS
General, United States Army
Chief of Staff

Distribution:

To be distributed in accordance with DA Form 12-28 (qty rqr block No. 27) direct and general support maintenance requirements for Field Collective Equipment.

CHANGE

NO. 1

HEADQUARTERS
DEPARTMENT OF THE ARMY
WASHINGTON, DC, 29 May 1990

TECHNICAL MANUAL
DIRECT SUPPORT AND GENERAL SUPPORT
MAINTENANCE REPAIR PARTS AND SPECIAL TOOLS LIST
(INCLUDING DEPOT MAINTENANCE REPAIR PARTS AND SPECIAL TOOLS)
FOR
FILTER UNIT, GAS-PARTICULATE, EMD AND GED, 300 CFM, ABC-M6
AND
FILTER UNIT, GAS-PARTICULATE, EMD AND GED, 300 CFM, ABC-M6

TM 3-4240-241-34P, 26 October 1972, is changed as follows:

1. The purpose of this change is to update guidance for disposal, handling, and storage of filters.
2. Page 11, Section II, Column (1), Figure 5, Item 10. Change SMR code from "PAOZZ" to PAOZA.
3. File this change sheet in front of the publication for reference purposes.

By Order of the Secretary of the Army:

CARL E. VUONO
General, United States Army
Chief of Staff

Official:

WILLIAM J. MEEHAN II
Brigadier General, United States Army
The Adjutant General

Distribution:

To be distributed in accordance with DA Form 12-28 (block 267), maintenance requirements for TM 3-4240-241-34P.

